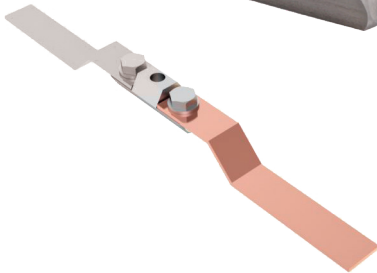
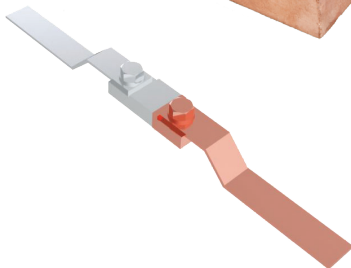
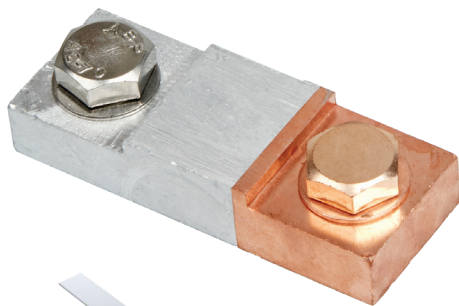


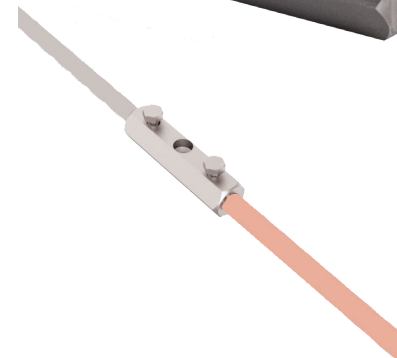
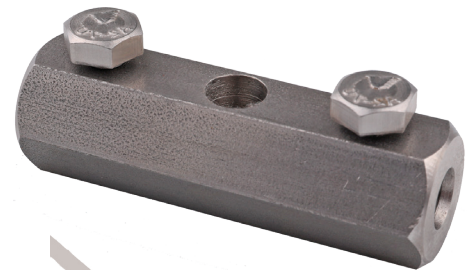
Bimetallic Connectors



Stainless steel connector for use with 25mm x 3mm conductor



Copper/aluminium connector for use with 25mm x 3mm conductor



Stainless steel connector for use with 25mm x 3mm, 8 dia or 50mm² conductor

Bimetallic Connectors are designed to connect aluminium conductor to copper earth conductor. They are a practical joining method without the need for tinning, riveting or wrapping around the joint. We recommend the use of oxide inhibiting compound (UNP250) with Bimetallic Connectors.

CONDUCTOR SIZE (mm)	CONNECTOR MATERIAL	WEIGHT (kg)	PART NO.
25 x 3	Stainless Steel	0.18	BM253HS
8 dia or 50mm ²	Stainless Steel	0.18	BM08HS
25 x 3 to 8 dia or 50mm ²	Stainless Steel	0.18	BM08253SS
25 x 3	Copper/Aluminium	0.18	BM253FC

Material: Stainless Steel grade 303 (BM253HS/BM08HS/BM08253SS)
Copper/Aluminium fuse welded (BM253FC)

Standard: BS:EN 62561-1, Class H

Tightening Torque: 12Nm



FIXINGS

1 x CSK 1½ x No.10 woodscrew
(A2CSKSLT1.5-10) + plug (PP10) not included



[SEE PAGE FIT:20](#)