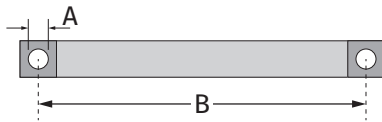
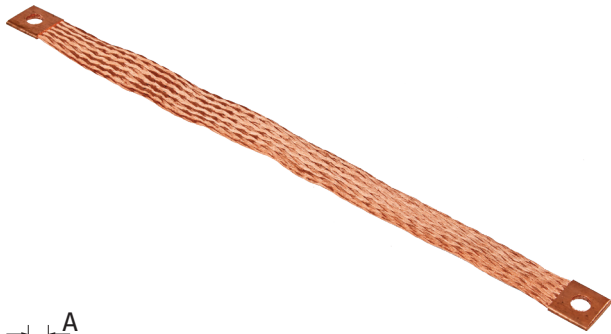


Flexible Flat Copper Braid Bonds



Our pre-terminated **Flexible Flat Copper Braid Bonds** are ideal for bonding of metal doors, gates, fencing etc.

DIMENSIONS (mm)	HOLE DIA. (A) (mm)	LENGTH (B) (mm)	CSA (mm ²)	WEIGHT (kg)	PART NO.
12 x 1	7.0	200	6.0	0.01	FB200/6/7
12 x 1	7.0	400	6.0	0.02	FB400/6/7
15 x 1.5	7.0	200	10	0.02	FB200/10/7
15 x 1.5	7.0	400	10	0.04	FB400/10/7
19 x 2.5	9.0	200	16	0.03	FB200/16/9
19 x 2.5	9.0	400	16	0.06	FB400/16/9
25 x 3	11	200	25	0.05	FB200/25/11
25 x 3	11	400	25	0.10	FB400/25/11
25 x 3.5	11	200	35	0.09	FB200/35/11
25 x 3.5	11	400	35	0.15	FB400/35/11
30 x 5	11	200	50	0.10	FB200/50/11
30 x 5	11	400	50	0.20	FB400/50/11
32 x 6	13	200	70	0.13	FB200/70/13
32 x 6	13	400	70	0.25	FB400/70/13
37 x 6	13	200	95	0.19	FB200/95/13
37 x 6	13	400	95	0.37	FB400/95/13
45 x 6	17	200	120	0.23	FB200/120/17
45 x 6	17	400	120	0.46	FB400/120/17
50 x 8	17	200	150	0.30	FB200/150/17
50 x 8	17	400	150	0.60	FB400/150/17

FIXINGS
Use M8 or M10 brass nuts, bolts and washers

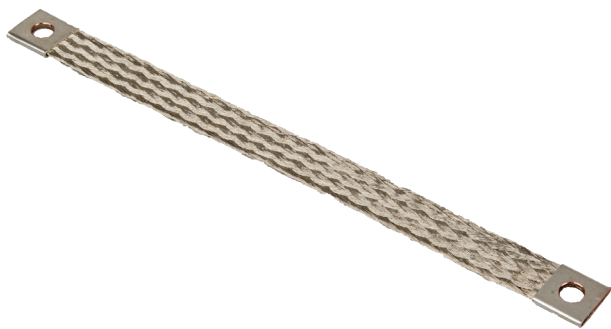
SEE FIXINGS SECTION PAGE FIX:2

Material: Copper

Standard: BS:EN 13602

OTHER MATERIALS, SIZES AND CONFIGURATIONS AVAILABLE UPON REQUEST.

Flexible Flat Copper Braid Bonds (Tinned)



Tinning adds extra corrosion protection to our range of **Flexible Flat Copper Braid Bonds (Tinned)**.

DIMENSIONS (mm)	HOLE DIA. (A) (mm)	LENGTH (B) (mm)	CSA (mm ²)	WEIGHT (kg)	PART NO.
12 X 1	7.0	200	6.0	0.01	FBT200/6/7
12 X 1	7.0	400	6.0	0.02	FBT400/6/7
15 X 1.5	7.0	200	10	0.02	FBT200/10/7
15 X 1.5	7.0	400	10	0.04	FBT400/10/7
19 X 2.5	9.0	200	16	0.03	FBT200/16/9
19 X 2.5	9.0	400	16	0.06	FBT400/16/9
25 X 3	11	200	25	0.05	FBT200/25/11
25 X 3	11	400	25	0.10	FBT400/25/11
25 X 3.5	11	200	35	0.09	FBT200/35/11
25 X 3.5	11	400	35	0.15	FBT400/35/11
30 X 5	11	200	50	0.10	FBT200/50/11
30 X 5	11	400	50	0.20	FBT400/50/11
32 X 6	13	200	70	0.13	FBT200/70/13
32 X 6	13	400	70	0.25	FBT400/70/13
37 X 6	13	200	95	0.19	FBT200/95/13
37 X 6	13	400	95	0.37	FBT400/95/13
45 X 6	17	200	120	0.23	FBT200/120/17
45 X 6	17	400	120	0.46	FBT400/120/17
50 X 8	17	200	150	0.30	FBT200/150/17
50 X 8	17	400	150	0.60	FBT400/150/17

FIXINGS
Use M8 or M10 stainless steel nuts, bolts and washers

SEE FIXINGS SECTION PAGE FIX:2

Material: Tinned Copper

Standard: BS:EN 13602

OTHER MATERIALS, SIZES AND CONFIGURATIONS AVAILABLE UPON REQUEST.