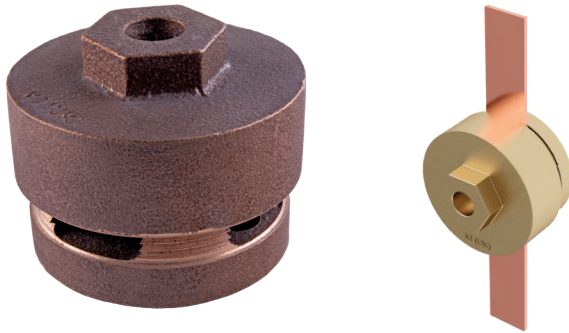


Screw Down Test Clamp



Screw Down Test Clamps join 25 x 3 conductor tape to facilitate annual testing of the Lightning Protection System.

The heavy duty lid simply screws on and off the threaded base.

CONDUCTOR SIZE (mm)	CONDUCTOR MATERIAL	WEIGHT (kg)	PART NO.
25 x 3	Copper	0.84	SDTC253

Material: Copper

Standard: BS:EN 62561-1, Class H

Tightening Torque: 20Nm



FIXINGS

2 x CSK 1½ x No.10 woodscrew (BCSW1.5-10) + plug (PP10) not included



[SEE PAGE FIT:20](#)