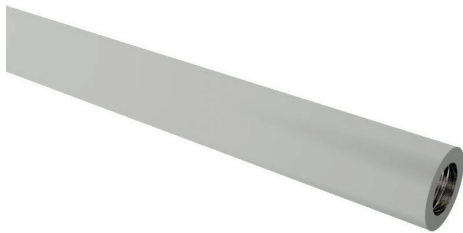


Stainless Steel Earth Rods



Made from austenitic steel to British standards.

Stainless Steel Earth Rods are similar to our **Solid Copper Rods** but are more anodic than copper, and are useful where galvanic corrosion might occur due to buried dissimilar metals being in close proximity to each other. The current carrying capacity of the **Stainless Steel Earth Rod** in relation to copper is poor.

Stainless Steel Earth Rods have a tapped hole at each end which allows them to be joined together by means of a coupling dowel.

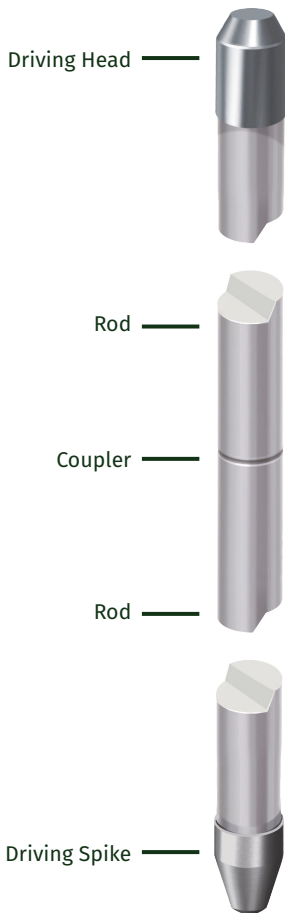
Stainless Steel Earth Rods can, if required, be supplied in different grades.

LENGTH (mm)	DIAMETER (mm)	INTERNAL THREAD (mm)	WEIGHT (kg)	PART NO.
1200	16	M10	1.87	ERSS1604
1500	16	M10	2.34	ERSS1605
1800	16	M10	2.81	ERSS1606
2400	16	M10	3.75	ERSS1608
3000	16	M10	4.69	ERSS1610
1200	20	M10	2.96	ERSS2004
1500	20	M10	3.65	ERSS2005
1800	20	M10	4.38	ERSS2006
2400	20	M10	5.84	ERSS2008
3000	20	M10	7.30	ERSS2010
1200	25	M10	4.89	ERSS2504
1500	25	M10	6.12	ERSS2505
1800	25	M10	7.34	ERSS2506
2400	25	M10	9.79	ERSS2508
3000	25	M10	12.24	ERSS2510

Material: Stainless steel

Standard: BS:EN 62561-2, BS 7430

Recommended for clay soils and marine/shore environments.



APPLICATION



COMPONENT ASSEMBLY:

Assemble Kingsmill **Stainless Steel Earth Rods** to the desired length with **Couplings** and add a **Driving Stud** to the top and a **Driving Spike** to the bottom for safe driving into the ground.