

## PART NO: KM2-20-3+0 SC

**TYPE:** Type 2 surge arrester

**DESCRIPTION:** Varistor based three-pole Type 2 surge arrester. Use in TN-C system sub-distribution boards on the boundary of LPZ1 and LPZ2 (if >10m away from the MDB). Suitable for houses, commercial and industrial buildings.

**RATING:** 20kA THREE PHASE TN-C



### LPL I + II

**SYSTEM:** THREE PHASE TN-C  
**SDB:** BOUNDARY of LPZ1 & LPZ2 (if >10m away from MDB)

### LPL III + IV

**SYSTEM:** THREE PHASE TN-C  
**SDB:** BOUNDARY of LPZ1 & LPZ2 (if >10m away from MDB)

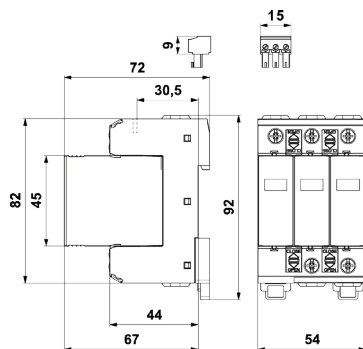
### Standards

BS:EN 62305 (lightning protection) and EN 61643-11 (surge protection devices).

### Electrical specification

Order number	KM2-20-3+0 SC	
System	TN-C/3 pole	
Nominal voltage	$U_n$	230V AC
Nominal voltage	$U_o$	230V/400V AC $\pm$ 10%
Maximum operating voltage	$U_c$	275V AC/350V DC
Nominal discharge current (8/20 $\mu$ s)	$I_n$	20kA
Maximum discharge current (8/20 $\mu$ s)	$I_{max}$	40kA
Voltage protection level at 5kA	$U_p$	0.9kV
Voltage protection level	$U_p$	1.35kV
Short-circuit current rating	$I_{SCCR}$	50kA
Maximum overcurrent protection		160A gL/gG
Response time	$t_a$	25ns
Cross-section of connected conductors solid (min - max)		1/35mm <sup>2</sup>
Cross-section of connected conductors stranded (min - max)		1/25mm <sup>2</sup>
Fault indication		Red indication field
Remote indication		Potential-free change-over contact
Remote indication contacts		250V/0.5A AC, 250V/0.1A DC
Cross-section of remote indication conductors		1.5mm <sup>2</sup>
Degree of protection		IP20
Range of operating temperatures (min - max)		-40°C - +80°C
Mounting		DIN rail 35mm
According to standard		EN 61643-11:2012, IEC 61643-11:2011 / T2
Weight		325g (nett), 365g (gross)

### Dimensions:



### Wiring diagram:

