

## Earth Points (without cover plate)

Kingsmill **Earth Points** (without cover plate) provide a convenient bonding point for bolted connections.

HOLES	FIXING HOLES	MATERIAL	STEM SIZE (∅)	WEIGHT (kg)	PART NO.
1	M8	Gunmetal	10mm	0.170	EBP1-M8
1	M10	Stainless Steel	10mm	0.217	EBP1SS-M10
1	M10	Gunmetal	10mm	0.170	EBP1
2	M10	Gunmetal	10mm	0.300	EBP2
4	M10	Gunmetal	10mm	0.350	EBP4

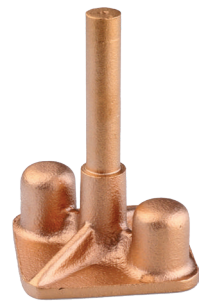
**Material:** Gunmetal/Stainless Steel

**Standard:** BS:EN 62561-1 Class H, BS 7430

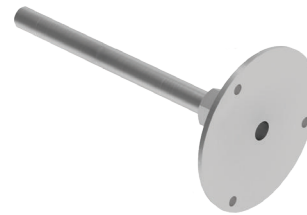
**Tightening torque:** 8Nm



EBP4



EBP2



EBP1SS-M10



EBP1