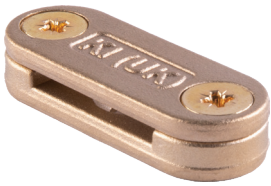


## BS:EN 62305 Metallic DC Clips (Flat conductor)



**BS:EN 62305 Metallic DC Clips** for securing lightning conductors to flat surfaces.

CONDUCTOR SIZE (mm)	CONDUCTOR TYPE	WEIGHT (kg)	PART NO.
25 x 3	Bare Copper	0.047	MDCF253
25 x 6	Bare Copper	0.057	MDCF256
31 x 6	Bare Copper	0.061	MDCF316
40 x 4	Bare Copper	0.062	MDCF404
50 x 6	Bare Copper	0.077	MDCF506
25 x 3	PVC Copper	0.055	MDCF253P
25 x 6	PVC Copper	0.064	MDCF256P
31 x 6	PVC Copper	0.069	MDCF316P
40 x 4	PVC Copper	0.071	MDCF404P
50 x 6	PVC Copper	0.084	MDCF506P
25 x 3	Aluminium	0.017	MDAF253
25 x 3	PVC Aluminium	0.020	MDAF253P

**MATERIAL:** High Quality Copper Alloy/Aluminium

NEW hot stamped design (part numbers in red) coming soon



**FIXINGS**

1 x CSK 1½ x No.10 woodscrew (BCSW1.5-10 brass for copper/A2CSKSLT1.5-10 stainless steel for aluminium) + plug (PP10) not included



SEE PAGE FIT:20

## Heavy Duty Metallic DC Clips (Flat conductor)



MDC253



MDA253

**Heavy Duty Metallic DC Clips** are suitable for use in Earthing and Lightning Protection applications.

CONDUCTOR SIZE (mm)	CONDUCTOR TYPE	WEIGHT (kg)	PART NO.
20 x 3	Bare Copper	0.09	MDC203
25 x 3	Bare Copper	0.07	MDC253
25 x 4	Bare Copper	0.06	MDC254
25 x 6	Bare Copper	0.06	MDC256
31 x 3	Bare Copper	0.09	MDC313
31 x 6	Bare Copper	0.11	MDC316
38 x 3	Bare Copper	0.12	MDC383
38 x 5	Bare Copper	0.12	MDC385
38 x 6	Bare Copper	0.14	MDC386
40 x 4	Bare Copper	0.14	MDC404
40 x 6	Bare Copper	0.14	MDC406
50 x 3	Bare Copper	0.15	MDC503
50 x 4	Bare Copper	0.15	MDC504
50 x 6	Bare Copper	0.17	MDC506
25 x 3	PVC Copper	0.13	MDC253P
25 x 6	PVC Copper	0.10	MDC256P
50 x 6	PVC Copper	0.26	MDC506P
25 x 3	Lead Covered Copper	0.20	MDC253LD
20 x 3	Bare Aluminium	0.02	MDA203
25 x 3	Bare Aluminium	0.03	MDA253
25 x 6	Bare Aluminium	0.04	MDA256
50 x 6	Bare Aluminium	0.05	MDA506
25 x 3	PVC Aluminium	0.04	MDA253P
50 x 6	PVC Aluminium	0.06	MDA506P

**MATERIAL:** High Copper Content Alloy/Gunmetal/Aluminium Alloys

**STANDARD:** BS:EN 62561-4



**FIXINGS**

1 x CSK 1½ x No.10 woodscrew (BCSW1.5-10 brass for copper/A2CSKSLT1.5-10 stainless steel for aluminium) + plug (PP10) not included



SEE PAGE FIT:20