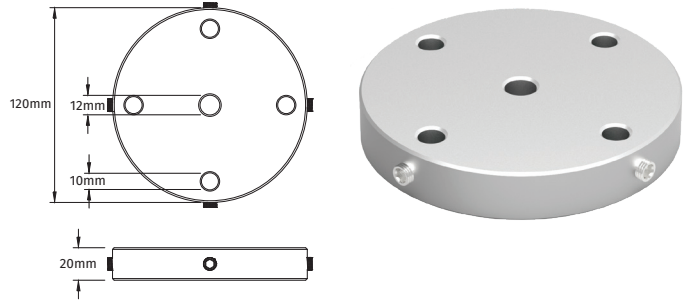


Insulated Lightning Conductor Cable Connection Ring

The **Connection Ring** connects several cables to the Air Terminal Mast, where more than one cable is required to meet separation distance requirements. The **Connection Ring** is fixed at the top of the Interception Mast (over the aluminium Air Rod section).

SOCKET SCREWS	WEIGHT (kg)	PART NO.
4 x M8 x 8mm	0.60	KM31500109

Material: Aluminium



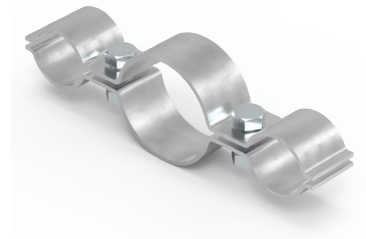
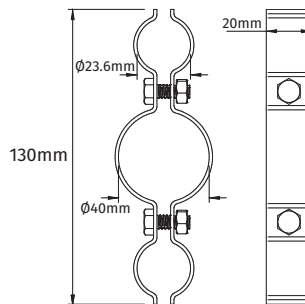
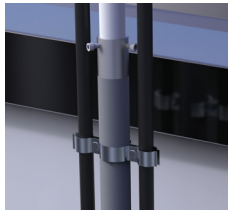
Insulated Lightning Conductor Cable Holder

For use with multiple cables on a mast.

The Kingsmill **Interception Air Rod Cable Holder** holds two Insulated Lightning Conductor cables on either side of the Interception Mast - in cases where more than one conductor is used.

SOCKET SCREWS	WEIGHT (kg)	PART NO.
2 x M6 x 16	0.10	KM30900105

Material: Stainless Steel



Insulated Lightning Conductor Cable Connector

Used to connect cables outside the separation distance area.

SOCKET SCREWS	WEIGHT (kg)	PART NO.
4 x M8 x 8	0.39	KM31100105

Material: Stainless Steel

