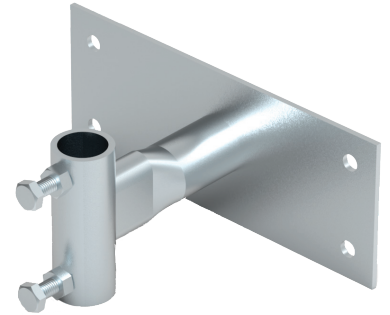
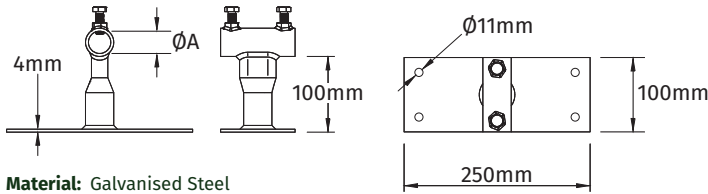


## Wall Mounted Bracket for Air Terminal Interception Mast

The Kingsmill **Wall Mounted Bracket for Air Terminal Interception Mast** is manufactured from hot dipped galvanised steel.

Use a minimum of two brackets per **Interception Mast** (maximum distance apart 0.8m).

AIR TERMINAL DIAMETER (A) (mm)	SECURING BOLTS	WEIGHT (kg)	PART NO.
31	2 x M10 x 30	1.50	KM96000102
42	2 x M10 x 30	2.70	KM96000202



## Pipe/Handrail Bracket for Air Terminal Interception Mast

The Kingsmill **Pipe/Handrail Bracket for Air Terminal Interception Mast** connects an **Interception Mast** to a vertical hand rail or pipe.

Use a minimum of two brackets per mast.

DESCRIPTION	THREAD	WEIGHT (kg)	PART NO.
Pipe/Handrail Bracket	M10	0.30	KM96000401



**Material:** Galvanised Steel

