

## Ridge Tile Air Terminal (single bracket)

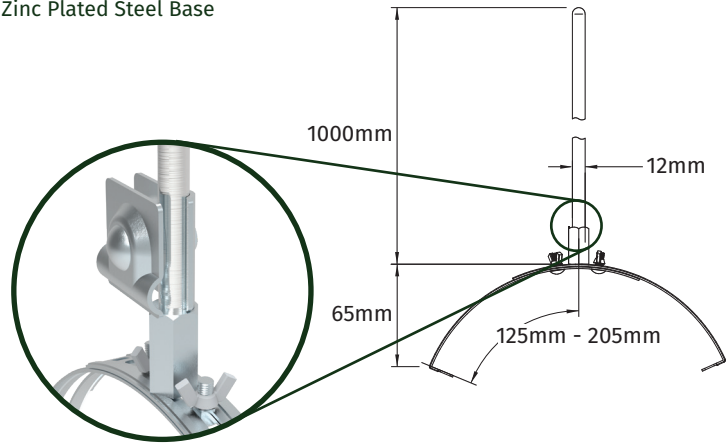


Kingsmill **Ridge Tile Air Terminals (single bracket)** are for use with 8mm diameter aluminium conductors.

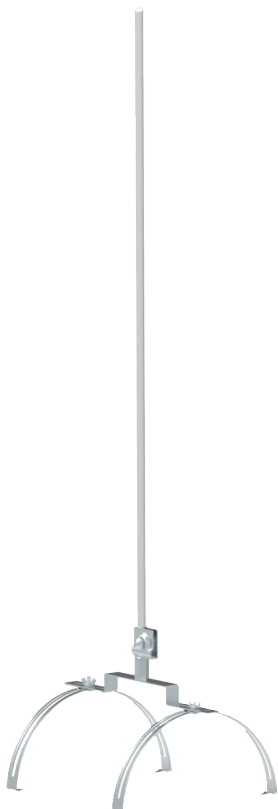
Connection of Conductor to Air Terminal is by means of a galvanised steel clamp (*shown below*).

ROD DIAMETER (mm)	TERMINAL HEIGHT (mm)	CONDUCTOR DIAMETER + MATERIAL	DEPTH (mm)	TILE DIAMETER (mm)	WEIGHT (kg)	PART NO.
12	1000	8mm Aluminium	65	125 - 205	0.6	KM97111009

**Material:** Aluminium/Zinc Plated Steel Base



## Ridge Tile Air Terminal (double bracket)



Kingsmill **Ridge Tile Air Terminals (double bracket)** are for use with 8mm diameter aluminium conductors.

Connection of Conductor to Air Terminal is by means of a galvanised steel clamp (*shown below*).

ROD DIAMETER (mm)	TERMINAL HEIGHT (A) (mm)	CONDUCTOR	TILE WIDTH (mm)	WEIGHT (kg)	PART NO.
12	1000	8mm Aluminium	36	0.9	KM97101009
12	1500	8mm Aluminium	350	KM97101509	

**Material:** Aluminium/Zinc Plated Steel Base

