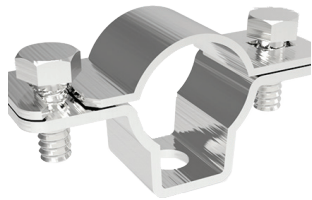
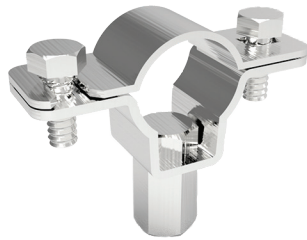


Stainless Steel Insulated Lightning Conductor Holder



KM31600105

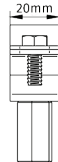
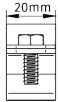
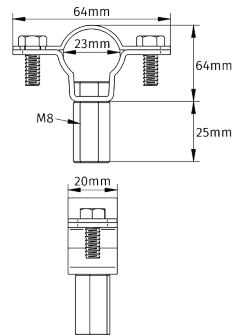
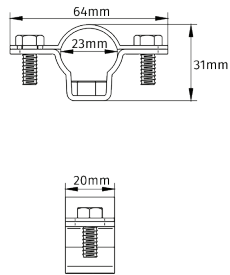


KM31600205

Corrosion resistant **Stainless Steel Insulated Lightning Conductor Holders** are used for fixing an insulated lightning conductor to various surfaces (when used with different adapters).

DESCRIPTION	WEIGHT (kg)	PART NO.
Cable Holder	0.04	KM31600105
Cable Holder with M8 internal thread adapter	0.08	KM31600205

Material: Stainless Steel



APPLICATION

COMPONENT ASSEMBLY:

