

## Insulated Separation Bars



**Insulated Separation Bars** maintain the separation distance between the lightning protection conductor and the object being protected.

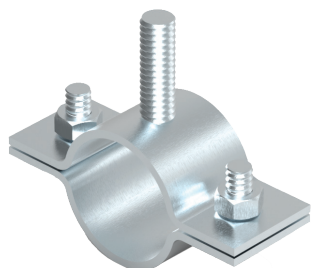
DESCRIPTION	DIMENSIONS (mm)		WEIGHT (kg)	PART NO.
	A	B		
750mm Separation Bar	750	638	0.48	KM97900729
1000mm Separation Bar	1000	888	0.57	KM97900029
1500mm Separation Bar	1500	1388	0.60	KM97901529
2000mm Separation Bar	2000	1888	0.80	KM97920029

M16 threaded bars available on request.

**Material:** GRP



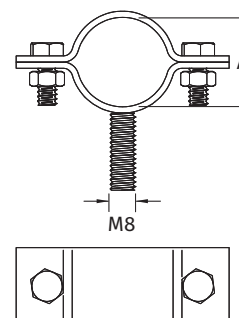
## Mast or Pipe to Insulated Separation Bar Clamp



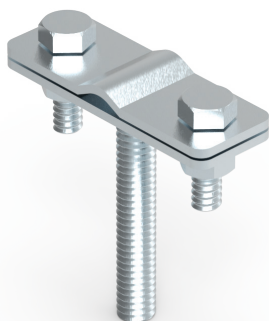
**Mast or Pipe to Insulated Separation Bar Clamp** for connecting to an Interception Mast or Pipe.

PIPE DIAMETER (A) (mm)	STUD	SCREW	WEIGHT (kg)	PART NO.
32	M8	2 x M8 x 20	0.10	KM98300401
40	M8	2 x M8 x 20	0.12	KM98300601

**Material:** Galvanised Steel



## Wire Conductor Holder



**Wire Conductor Holder** secures the Lightning Conductor to the end of the Insulated Separation Bar.

DESCRIPTION	STUD	WEIGHT (kg)	PART NO.
Wire Conductor Holder for 8mm diameter circular conductor and flat tape up to 30mm x 4mm	M8	0.06	KM98400201

**Material:** Galvanised Steel

