

Introduction	FIT:2 - 3
Metallic DC Clips For securing conductors to walls and roofs etc	FIT:4
Metallic Cable Saddles For use in both Lightning Protection and Earthing Systems	FIT:5
Non-Metallic DC Clips PVC clips for securing conductors to walls and roofs etc. Colours blend with our range of PVC coloured conductors	FIT:6
Adhesive Clips For securing conductors to surfaces where drilling is not permitted	FIT:7
One Hole Cable Clips Simple solution for fixing circular conductors to flat surfaces	FIT:8
Clip Bases For securing clips to surfaces including bitumen roofing and ridge tiles	FIT:9
Clamps Square and Tee clamps for providing three and four way conductor connections	FIT:10 - 11
Holdfasts Bases for special fixing applications	FIT:12 - 14
Standing Seam Clamps For securing lightning conductors to Standing Seam roofing sheets	FIT:15
Test Links/Clamps Disconnectable clamps to separate lightning conductor from the Earthing System during testing	FIT:16 - 17
Bimetallic Connectors For connecting aluminium conductors to copper conductors	FIT:18
Lightning Strike Counter Counts the number of lightning strikes to a building	FIT:19
Screws and Plugs	FIT:20

Introduction

Once the type of Conductor has been chosen, it is important to consider how to fix/secure this to the structure to be protected. The Kingsmill range includes fixings for both roof and wall and are designed to suit most applications, as well as materials.

DC Clips, Saddles, Clips, Hold Fast, Adhesive Clips, Bimetallic Connectors, special roofing fixings etc. Materials used include: high copper content alloys, aluminium and UV resistant plastics.



**PYRAMID
HOLDFASTS**
page FIT:13



**SQUARE AND
TEE CLAMPS**
page FIT:10 - 11



**HOLDFAST AND
STANDING SEAM
CLAMPS**
pages FIT:14 - 15



TEST LINKS
pages FIT:16 - 17




**ADHESIVE
CLIPS**
page FIT:7



**METALLIC
CLIPS**
page FIT:4



**NON-METALLIC
CLIPS**
page FIT:6



**LIGHTNING STRIKE
COUNTER**
page FIT:19



**BIMETALLIC
CONNECTORS**
pages FIT:18



Kingsmill connection components that have been tested to BS:EN 62561-1 - *Lightning Protection Components - requirements for Connection Components* have passed both environmental ageing and 100kA impulse current testing and are rated H.

Introduction

When choosing a connector it is important to ensure:

- The connector is mechanically robust.
- The connector is selected according to its application.
- The connector is rated for its application.
- To avoid bimetallic corrosion - use a bimetallic connector (*do not connect bare copper directly to bare aluminium, or have water run-off from copper, fall onto aluminium*).

Galvanic corrosion - happens when there is a potential difference between dissimilar metals:

- *When the materials are in contact in the presence of an electrolyte, corrosion occurs. One metal becomes the anode, the other the cathode. The anode will tend to go into solution and therefore corrode. The electrolyte can be water with impurities from the air.*
- *In the instance of water run-off from copper - the water carries fine copper corrosion particles which, when they drip on to aluminium or zinc, may result in corrosion. The direct contact of the dissimilar metals is not required for corrosion to occur in such a case.*

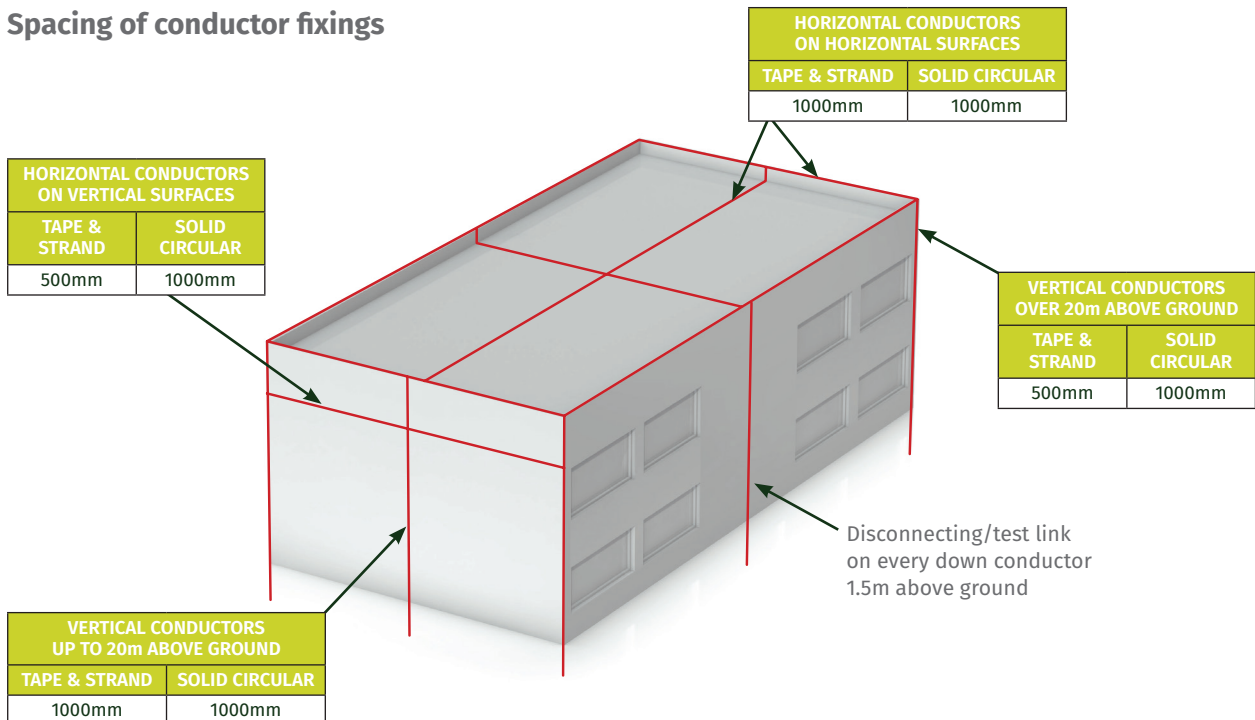
From BS:EN 62305 . . .

BS:EN 62305-3 contains guidance on the quantity of fixings to be used through specifying minimum distances and usage.

Down conductors should each have the provision of a test or disconnecting link to separate the above and below ground conductor networks during testing.

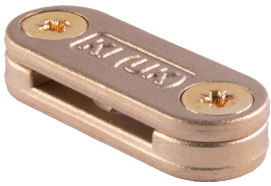
Conductor fixings should be placed taking into account the minimum spacings recommended within BS:EN 62305, as well as practical considerations associated with building geometry.

Spacing of conductor fixings



Most Kingsmill connection components have been tested to BS:EN 62561-1 - Lightning Protection Components - requirements for connection components. They have passed both environmental ageing and 100kA impulse current testing and rated H.

BS:EN 62305 Metallic DC Clips (Flat conductor)



BS:EN 62305 Metallic DC Clips for securing lightning conductors to flat surfaces.

CONDUCTOR SIZE (mm)	CONDUCTOR TYPE	WEIGHT (kg)	PART NO.
25 x 3	Bare Copper	0.047	MDCF253
25 x 6	Bare Copper	0.057	MDCF256
31 x 6	Bare Copper	0.061	MDCF316
40 x 4	Bare Copper	0.062	MDCF404
50 x 6	Bare Copper	0.077	MDCF506
25 x 3	PVC Copper	0.055	MDCF253P
25 x 6	PVC Copper	0.064	MDCF256P
31 x 6	PVC Copper	0.069	MDCF316P
40 x 4	PVC Copper	0.071	MDCF404P
50 x 6	PVC Copper	0.084	MDCF506P
25 x 3	Aluminium	0.017	MDAF253
25 x 3	PVC Aluminium	0.020	MDAF253P

MATERIAL: High Quality Copper Alloy/Aluminium

NEW hot stamped design (part numbers in red) coming soon



FIXINGS

1 x CSK 1½ x No.10 woodscrew (BCSW1.5-10 brass for copper/A2CSKSLT1.5-10 stainless steel for aluminium) + plug (PP10) not included



SEE PAGE FIT:20

Heavy Duty Metallic DC Clips (Flat conductor)



MDC253



MDA253

Heavy Duty Metallic DC Clips are suitable for use in Earthing and Lightning Protection applications.

CONDUCTOR SIZE (mm)	CONDUCTOR TYPE	WEIGHT (kg)	PART NO.
20 x 3	Bare Copper	0.09	MDC203
25 x 3	Bare Copper	0.07	MDC253
25 x 4	Bare Copper	0.06	MDC254
25 x 6	Bare Copper	0.06	MDC256
31 x 3	Bare Copper	0.09	MDC313
31 x 6	Bare Copper	0.11	MDC316
38 x 3	Bare Copper	0.12	MDC383
38 x 5	Bare Copper	0.12	MDC385
38 x 6	Bare Copper	0.14	MDC386
40 x 4	Bare Copper	0.14	MDC404
40 x 6	Bare Copper	0.14	MDC406
50 x 3	Bare Copper	0.15	MDC503
50 x 4	Bare Copper	0.15	MDC504
50 x 6	Bare Copper	0.17	MDC506
25 x 3	PVC Copper	0.13	MDC253P
25 x 6	PVC Copper	0.10	MDC256P
50 x 6	PVC Copper	0.26	MDC506P
25 x 3	Lead Covered Copper	0.20	MDC253LD
20 x 3	Bare Aluminium	0.02	MDA203
25 x 3	Bare Aluminium	0.03	MDA253
25 x 6	Bare Aluminium	0.04	MDA256
50 x 6	Bare Aluminium	0.05	MDA506
25 x 3	PVC Aluminium	0.04	MDA253P
50 x 6	PVC Aluminium	0.06	MDA506P

MATERIAL: High Copper Content Alloy/Gunmetal/Aluminium Alloys

STANDARD: BS:EN 62561-4



FIXINGS

1 x CSK 1½ x No.10 woodscrew (BCSW1.5-10 brass for copper/A2CSKSLT1.5-10 stainless steel for aluminium) + plug (PP10) not included



SEE PAGE FIT:20

Heavy Duty Metallic Cable Saddles

Heavy Duty Metallic Cable Saddles are suitable for use in both Lightning Protection and Earthing Systems.

Use with bare solid and stranded copper conductor

CONDUCTOR CSA (mm ²)	CONDUCTOR DIA (approx mm)	CONDUCTOR TYPE	WEIGHT (kg)	PART NO.
50	8	Bare solid copper	0.100	HDSC08
16	5.1	Bare stranded copper	0.105	HDCS16
25	6.42	Bare stranded copper	0.105	HDCS25
35	7.56	Bare stranded copper	0.105	HDCS35
50	8.9	Bare stranded copper	0.100	HDCS50
70	10.7	Bare stranded copper	0.100	HDCS70
95	12.6	Bare stranded copper	0.107	HDCS95
120	14.21	Bare stranded copper	0.107	HDCS120
150	15.75	Bare stranded copper	0.215	HDCS150
185	17.64	Bare stranded copper	0.205	HDCS185
240	20.25	Bare stranded copper	0.300	HDCS240
300	22.68	Bare stranded copper	0.290	HDCS300
400	25.65	Bare stranded copper	0.285	HDCS400

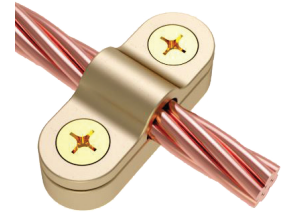
Material: High copper content alloy



FIXINGS
1 x CSK 1½ x No.10 woodscrew (BCSW1.5-10) + plug (PP10) not included



[SEE PAGE FIT:20](#)



Use with PVC insulated copper cable

CONDUCTOR CSA (mm ²)	CONDUCTOR DIA (approx mm)	CONDUCTOR TYPE	WEIGHT (kg)	PART NO.
16	7.10	PVC insulated copper cable	0.105	HDCS16INS
25	8.90	PVC insulated copper cable	0.100	HDCS25INS
35	9.95	PVC insulated copper cable	0.100	HDCS35INS
50	11.70	PVC insulated copper cable	0.110	HDCS50INS
70	13.35	PVC insulated copper cable	0.115	HDCS70INS
95	15.60	PVC insulated copper cable	0.215	HDCS95INS
120	17.20	PVC insulated copper cable	0.205	HDCS120INS
150	19.10	PVC insulated copper cable	0.205	HDCS150INS
185	21.30	PVC insulated copper cable	0.295	HDCS185INS
240	24.30	PVC insulated copper cable	0.285	HDCS240INS
300	27.05	PVC insulated copper cable	0.280	HDCS300INS
400	30.35	PVC insulated copper cable	0.275	HDCS400INS

Material: High copper content alloy



FIXINGS
1 x CSK 1½ x No.10 woodscrew (BCSW1.5-10) + plug (PP10) not included



[SEE PAGE FIT:20](#)

Non-Metallic DC Clips (Flat conductor)



Non-Metallic DC Clips are available in six colours to match bare and PVC copper and aluminium tapes.

CONDUCTOR SIZE (mm)	CONDUCTOR TYPE	COLOUR	WEIGHT (kg)	PART No.
20 x 3	Bare	Brown	0.01	PCBN203B
20 x 3	Bare	Grey	0.01	PCGY203B
25 x 3	Bare	Brown	0.01	PCBN253B
25 x 3	Bare	Grey	0.01	PCGY253B
50 x 6	Bare	Brown	0.01	PCBN506B
25 x 3	PVC	Brown	0.01	PCBN253P
25 x 3	PVC	Black	0.01	PCBL253P
25 x 3	PVC	Grey	0.01	PCGY253P
25 x 3	PVC	Green	0.01	PCGN253P
25 x 3	PVC	Stone	0.01	PCST253P
25 x 3	PVC	White	0.01	PCWH253P

Material: UV Stabilised Polypropylene



FIXINGS

1 x CSK 1½ x No.10 woodscrew (BCSW1.5-10 or AZCSKSLT1.5-10) + plug (PP10) not included



[SEE PAGE FIT:20](#)

Non-Metallic DC Clips (Circular - push in type)



One-piece **Non-Metallic DC Clips** are designed for ease of installation. They suit 8mm bare and PVC sheathed circular conductors and are UV stabilised to prevent degradation in cold weather conditions.

CONDUCTOR DIA. (mm)	CONDUCTOR TYPE	COLOUR	WEIGHT (kg)	PART No.
8.0	Bare	Brown	0.01	PCBN08B/PUSH
8.0	Bare	Grey	0.01	PCGY08B/PUSH
8.0	PVC	Brown	0.01	PCBN08P/PUSH
8.0	PVC	Grey	0.01	PCGY08P/PUSH
8.0	PVC	Black	0.01	PCBL08P/PUSH
8.0	PVC	Stone	0.01	PCST08P/PUSH
8.0	PVC	White	0.01	PCWH08P/PUSH

Material: UV Stabilised Polypropylene



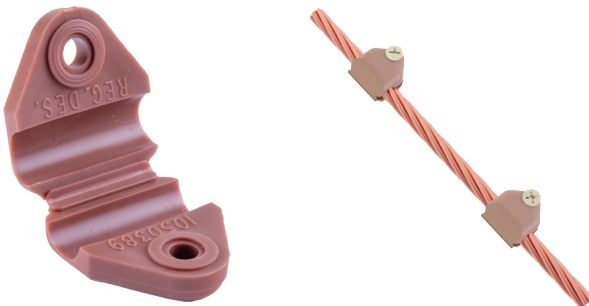
FIXINGS

1 x CSK 1½ x No.10 woodscrew (BCSW1.5-10 or AZCSKSLT1.5-10) + plug (PP10) not included



[SEE PAGE FIT:20](#)

Non-Metallic DC Clips (Circular - wrap over type)



Wrap Over Type Clips are designed for ease of installation. They suit 8mm bare and PVC sheathed circular conductors.

CONDUCTOR DIA. (mm)	CONDUCTOR TYPE	COLOUR	WEIGHT (kg)	PART No.
8.0	Bare	Brown	0.01	PCBN08B/BUTT
8.0	Bare	Grey	0.01	PCGY08B/BUTT
8.0	PVC	Brown	0.01	PCBN08P/BUTT
8.0	PVC	Grey	0.01	PCGY08P/BUTT
8.0	PVC	Black	0.01	PCBL08P/BUTT
8.0	PVC	Stone	0.01	PCST08P/BUTT
8.0	PVC	White	0.01	PCWH08P/BUTT

Material: UV Stabilised Polypropylene



FIXINGS

1 x CSK 1½ x No.10 woodscrew (BCSW1.5-10 or AZCSKSLT1.5-10) + plug (PP10) not included



[SEE PAGE FIT:20](#)

Adhesive Clips (Flat conductor)

Adhesive Clips are used where no mechanical fixing method can be achieved or allowed. The base has a threaded hole and is supplied with a fixing screw to suit our **Non-Metallic DC Clip**.

The base is fixed using the adhesive peel off strip and must be applied to a clean and dust free surface. Please use the **Surface Primer** to clean the surface (Part No. SP01).

CONDUCTOR SIZE (mm)	CONDUCTOR	COLOUR	WEIGHT (kg)	PART NO.
25 x 3	Bare	Brown	0.03	PCBN253B/AD
25 x 3	Bare	Grey	0.03	PCGY253B/AD
25 x 3	PVC Covered	Brown	0.03	PCBN253P/AD
25 x 3	PVC Covered	Grey	0.03	PCGY253P/AD
25 x 3	PVC Covered	Black	0.03	PCBL253P/AD
25 x 3	PVC Covered	Stone	0.03	PCST253P/AD
25 x 3	PVC Covered	White	0.03	PCWH253P/AD

Material: UV stabilised polypropylene



Adhesive Clips (Circular conductor)

Adhesive Clips are used where no mechanical fixing method can be achieved or allowed. The base has a threaded hole and is supplied with a fixing screw to suit our **Non-Metallic DC Clip**.

The base is fixed using the adhesive peel off strip and must be applied to a clean and dust free surface. Please use the **Surface Primer** to clean the surface (Part No. SP01).

CONDUCTOR SIZE (mm)	CONDUCTOR	COLOUR	WEIGHT (kg)	PART NO.
8.0	Bare	Brown	0.02	PCBN08B/AD
8.0	Bare	Grey	0.02	PCGY08B/AD
8.0	PVC Covered	Brown	0.02	PCBN08P/AD
8.0	PVC Covered	Grey	0.02	PCGY08P/AD
8.0	PVC Covered	Black	0.02	PCBL08P/AD
8.0	PVC Covered	Stone	0.02	PCST08P/AD
8.0	PVC Covered	White	0.02	PCWH08P/AD

Material: UV stabilised polypropylene



SURFACE PRIMER

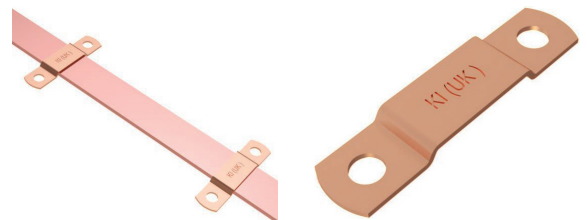
We recommend the use of a suitable **Surface Primer** (such as Norbond N2292) to clean the surface that the **Adhesive Clip** is being adhered to.

Tape Clips (Flat conductor)

Metal **Tape Clips** hold the tape flush to the surface and are fixed using two screws. They are only suitable for use with bare tape.

CONDUCTOR SIZE (mm)	MATERIAL	WEIGHT (kg)	PART NO.
20 x 3	Copper	0.02	TPC203
25 x 3	Copper	0.02	TPC253
25 x 3	Aluminium	0.02	TPA203
25 x 3	Aluminium	0.02	TPA253
25 x 3	Copper	0.02	TPC253P

Material: Copper to BS:EN 13601 (formerly BS 1432)
Aluminium to BS:EN 755-5



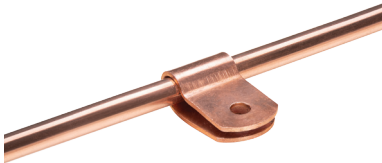
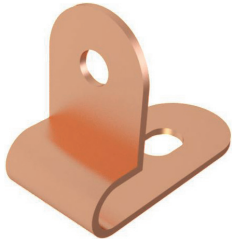
FIXINGS

2 x CSK 1½ x No:10 woodscrew (BCSW1.5-10 brass for copper/A2CSKSLT1.5-10 stainless steel for aluminium) + plug (PP10) not included



SEE PAGE FIT:20

One Hole Cable Clips (Circular conductor)



One Hole Cable Clips are a simple solution for fixing stranded or solid circular conductors to flat surfaces.

CONDUCTOR SIZE (mm)	CONDUCTOR TYPE	WEIGHT (kg)	PART NO.
8 Dia	Copper	0.01	OH8C
8 Dia	Aluminium	0.01	OH8A
8 Dia	Copper PVC Covered	0.01	OH10C
8 Dia	Aluminium PVC Covered	0.01	OH10A

Material: Copper/Aluminium

A simple, economical clip design for securing cables to flat surfaces.

Use with bare stranded copper conductor

CONDUCTOR CSA (mm ²)	CONDUCTOR DIA (approx mm)	CONDUCTOR TYPE	WEIGHT (kg)	PART NO.
16	5.1	Bare stranded copper	0.020	OH016
25	6.42	Bare stranded copper	0.020	OH025
35	7.56	Bare stranded copper	0.020	OH035
50	8.9	Bare stranded copper	0.020	OH050
70	10.7	Bare stranded copper	0.020	OH070
95	12.6	Bare stranded copper	0.022	OH095
120	14.21	Bare stranded copper	0.022	OH120
150	15.75	Bare stranded copper	0.025	OH150
185	17.64	Bare stranded copper	0.025	OH185
240	20.25	Bare stranded copper	0.027	OH240
300	22.68	Bare stranded copper	0.027	OH300
400	25.65	Bare stranded copper	0.032	OH400

Use with PVC insulated copper cable

CONDUCTOR CSA (mm ²)	CONDUCTOR DIA (approx mm)	CONDUCTOR TYPE	WEIGHT (kg)	PART NO.
16	7.10	PVC insulated copper cable	0.020	OH016INS
25	8.90	PVC insulated copper cable	0.020	OH025INS
35	9.95	PVC insulated copper cable	0.020	OH035INS
50	11.70	PVC insulated copper cable	0.022	OH050INS
70	13.35	PVC insulated copper cable	0.022	OH070INS
95	15.60	PVC insulated copper cable	0.025	OH095INS
120	17.20	PVC insulated copper cable	0.027	OH120INS
150	19.10	PVC insulated copper cable	0.027	OH150INS
185	21.30	PVC insulated copper cable	0.027	OH185INS
240	24.30	PVC insulated copper cable	0.030	OH240INS
300	27.05	PVC insulated copper cable	0.032	OH300INS
400	30.35	PVC insulated copper cable	0.032	OH400INS

Material: High Copper Content Alloy



FIXINGS
1 x CSK 1½ x No.10 woodscrew (BCSW1.5-10) + plug (PP10) not included



SEE PAGE FIT:20

Felt Pad Clip Bases

Only use on bitumen roofing felt. Includes clip.

CONDUCTOR SIZE/TYPE (mm)	COLOUR	WEIGHT (kg)	PART NO.
8 Bare	Brown	0.05	PCBN08B/PUSH/FP
8 Bare	Grey	0.05	PCGY08B/PUSH/FP
8 PVC Covered	Brown	0.05	PCBN08P/PUSH/FP
8 PVC Covered	Grey	0.05	PCGY08P/PUSH/FP
8 PVC Covered	Black	0.05	PCBL08P/PUSH/FP
8 PVC Covered	Stone	0.05	PCST08P/PUSH/FP
8 PVC Covered	White	0.05	PCWH08P/PUSH/FP
25 x 3 Bare	Brown	0.05	PCBN253B/FP
25 x 3 Bare	Grey	0.05	PCGY253B/FP
25 x 3 PVC Covered	Brown	0.05	PCBN253P/FP
25 x 3 PVC Covered	Grey	0.05	PCGY253P/FP
25 x 3 PVC Covered	Black	0.05	PCBL253P/FP
25 x 3 PVC Covered	Stone	0.05	PCST253P/FP
25 x 3 PVC Covered	White	0.05	PCWH253P/FP
25 x 3 PVC Covered	Green	0.05	PCGN253P/FP

Material: Roofing felt/polypropylene

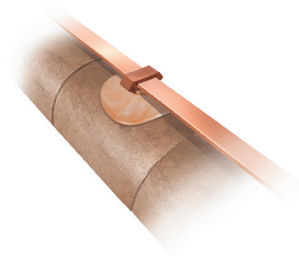


Flexible DC Clip Bases

Supplied with an M6 CSK screw for attaching the clip. Can be used with our **DC Clip** and **Square Clamp** ranges.

DESCRIPTION	COLOUR	WEIGHT (kg)	PART NO.
Flexible self-adhesive DC Clip Base	Brown	0.037	PCBNFAD/BASE
Flexible self-adhesive DC Clip Base	Grey	0.037	PCGYFAD/BASE
Flexible DC Clip Base	Brown	0.011	PCBNF/BASE
Flexible DC Clip Base	Grey	0.011	PCGYF/BASE

Material: Polypropylene



APPLICATION

+
=

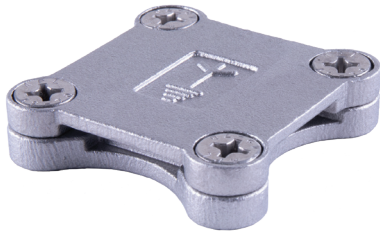
COMPONENT ASSEMBLY:

Flexible DC Clip Bases

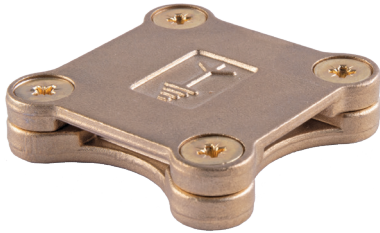
Non-Metallic DC Clips

The Kingsmill **Flexible DC Clip Bases** are designed for fixing to curved surfaces such as ridge tiles.

Square Clamps (Flat conductor)



SQCAF253



SQCCF253

BS62305 hot stamped design - NEW

Square Clamps are designed for a four way connection and are suitable for crossing over tapes, straight through joints or 'T' connections to form a continuous network of tapes.

Countersunk hole in the base for fixing the clamp in place.


CONDUCTOR SIZE (mm)	CONDUCTOR MATERIAL	WEIGHT (kg)	PART NO.
25 x 3	Aluminium	0.05	SQCAF253
25 x 3	Copper	0.15	SQCCF253
25 x 6	Copper	0.19	SQCCF256
31 x 3	Copper	0.22	SQCCF313
31 x 6	Copper	0.22	SQCCF316
40 x 6	Copper	0.79	SQCCF406
50 x 6	Copper	0.35	SQCCF506

Material: Aluminium/Copper Alloy


Standard: BS:EN 62561-1, Class H

Tightening Torque: 6Nm

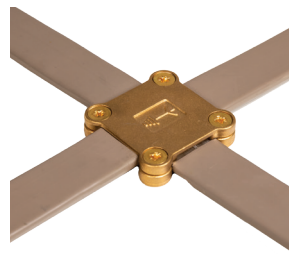
NEW hot stamped design (part numbers in red) coming soon



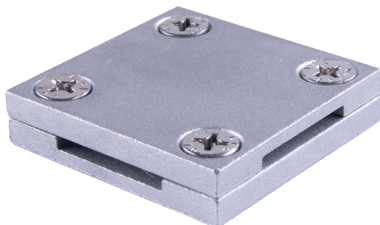
FIXINGS
 1 x CSK 1½ x No.10 woodscrew (BCSW1.5-10 brass for copper/A2CSKSLT1.5-10 stainless steel for aluminium) + plug (PP10) not included



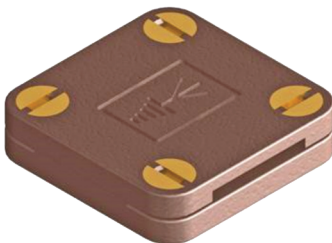
SEE PAGE FIT:20



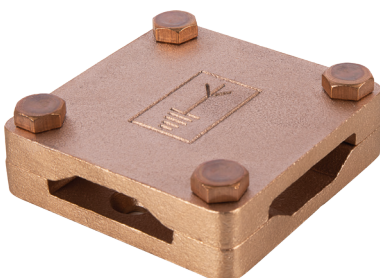
Kingsmill **Square Clamps** permit neat joints on PVC covered conductors due to the recessed lid.



SQCA253



SQCC253



SQCC506


Earthing Range

CONDUCTOR SIZE (mm)	CONDUCTOR MATERIAL	WEIGHT (kg)	PART NO.
25 x 3	Aluminium	0.08	SQCA253
25 x 3	Copper	0.23	SQCC253
25 x 6	Copper	0.44	SQCC256
31 x 3	Copper	0.30	SQCC313
31 x 6	Copper	0.22	SQCC316
40 x 6	Copper	0.79	SQCC406
50 x 6	Copper	1.00	SQCC506


Material: Aluminium/High Copper Content Alloy/Gunmetal

Standard: BS:EN 62561-1, Class H

Tightening Torque: 6Nm



FIXINGS
 1 x CSK 1½ x No.10 woodscrew (BCSW1.5-10 brass for copper/A2CSKSLT1.5-10 stainless steel for aluminium) + plug (PP10) not included



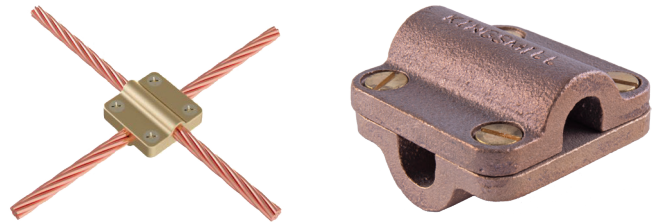
SEE PAGE FIT:20

Square Clamps (Circular conductor)

Square Clamps provide four way connection and are suitable for crossing over cable, straight through joints or 'T' connections to form a continuous network of cables. Countersunk hole in the base for fixing the clamp in place.

CONDUCTOR SIZE (mm/mm ²)	MATERIAL	WEIGHT (kg)	PART NO.
8 Dia	Aluminium	0.23	SQCA08
8 Dia	Copper	0.23	SQCW08
50	Copper	0.30	SQCW50
70	Copper	0.26	SQCW70
95	Copper	0.33	SQCW95

Material: Aluminium/copper alloy
Standard: BS:EN 62561-1, Class H
Tightening Torque: 6Nm

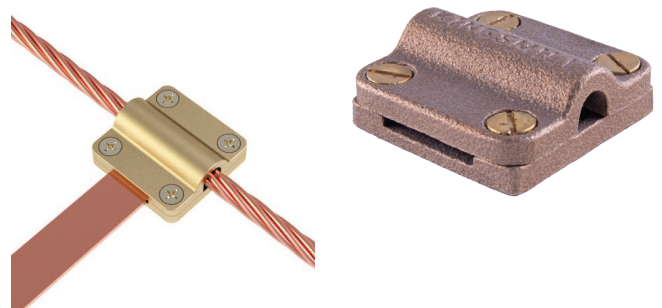


Square Clamps (Flat to circular conductor)

Square Clamps provide four way connection and are suitable for crossing over tapes and cables in straight through joints or 'T' connections to form a continuous cable network. Countersunk hole in the base for fixing the clamp in place.

CONDUCTOR SIZE (mm)	CONDUCTOR RANGE (mm/mm ²)	WEIGHT (kg)	PART NO.
25 x 3	8 Dia	0.16	SQCC25308
25 x 3	50	0.16	SQCC25350
25 x 3	70	0.14	SQCC25370
25 x 3	95	0.12	SQCC25395

Material: Gunmetal
Standard: BS:EN 62561-1, Class H
Tightening Torque: 6Nm



FIXINGS
 1 x CSK 1½ x No.10 woodscrew (BCSW1.5-10) + plug (PP10) not included

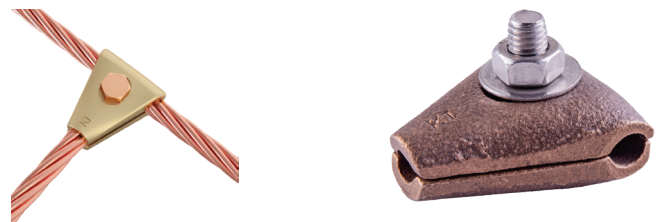
[SEE PAGE FIT:20](#)

Tee Clamps

Kingsmill **Tee Clamps** are designed for a three way connection.

CONDUCTOR SIZE (mm)	MATERIAL	WEIGHT (kg)	PART NO.
8 Dia	Copper	0.17	TEEC08
8 Dia	Aluminium	0.07	TEEA08

Material: Copper alloy/aluminium
Standard: BS:EN 62561-1, Class H
Tightening Torque: 12Nm



Circular Conductor Joining and Tee Clamps

Circular Conductor Joining and Tee clamps connect 8mm diameter conductor in straight or crossover configurations.

CONDUCTOR SIZE (mm)	MATERIAL	WEIGHT (kg)	PART NO.
8 Dia	Steel	0.05	SQCS08-MV
8 Dia	Copper	0.05	SQCC08-MV
8 Dia	Aluminium	0.01	SQCA08-MV

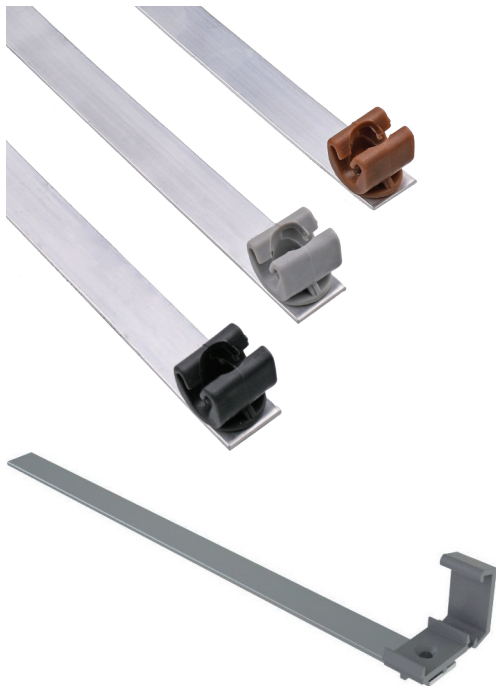
Material: Copper/aluminium/zinc plated steel
Standard: BS:EN 62561-1



SQCC08-MV

SQCA08-MV

Slate Holdfasts (Flat and circular conductor)



Slate Holdfasts are used for the installation of circular conductor tape above the roof tiles without the need for drilling holes.

The aluminium tail slides under the roof tile and is fixed to the wooden beam or tile batten using proprietary galvanised nails. The clip then protrudes from the tile and offers a fixing for the tape.

For use with circular conductor

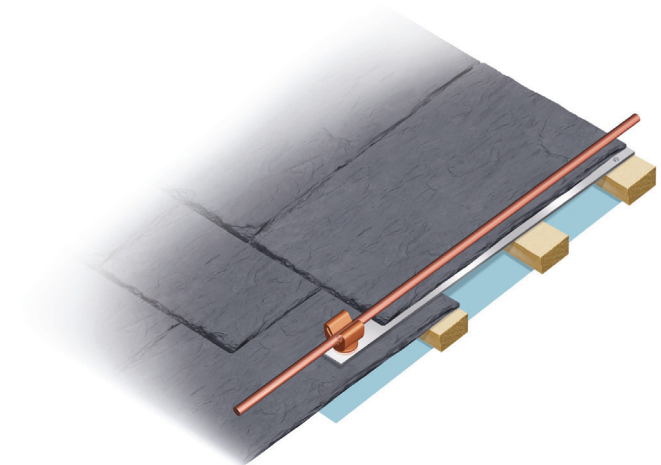
CONDUCTOR DIA (mm)	CONDUCTOR TYPE	COLOUR	WEIGHT (kg)	PART No.
8	Bare	Brown	0.05	SHBN08B/PUSH
8	Bare	Grey	0.05	SHGY08B/PUSH
8	PVC covered	Brown	0.05	SHBN08P/PUSH
8	PVC covered	Grey	0.05	SHGY08P/PUSH
8	PVC covered	Black	0.05	SHBL08P/PUSH
8	PVC covered	Stone	0.05	SHST08P/PUSH
8	PVC covered	White	0.05	SHWH08P/PUSH

For use with flat conductor

CONDUCTOR SIZE (mm)	CONDUCTOR TYPE	COLOUR	WEIGHT (kg)	PART No.
25 x 3	Bare	Brown	0.05	SHBN253B
25 x 3	Bare	Grey	0.05	SHGY253B
25 x 3	PVC	Brown	0.05	SHBN253P
25 x 3	PVC	Grey	0.05	SHGY253P
25 x 3	PVC	Black	0.05	SHBL253P
25 x 3	PVC	Stone	0.05	SHST253P
25 x 3	PVC	Green	0.05	SHGN253P
25 X 3	PVC	White	0.05	SHWH253P

Material: Polypropylene clip/Aluminium tape

Standard: Aluminium tape to BS:EN 755-5



Pyramid Holdfasts

Supplied filled with concrete. Lip around the base enables building in to bitumen type roofs.

CONDUCTOR DIA (mm)	CONDUCTOR TYPE	FIXING SCREW	CLIP PROVISION	WEIGHT (kg)	PART NO.
8	Bare	-	x 2	1.00	PHFB08X2
8	Bare	-	x 1	0.98	PHFB08
10	PVC Covered	-	x 1	0.98	PHFB10
Universal	Universal	M6	x 1	0.98	PHFBM6

Material: Polyethylene
Standard: BS:EN 62561-1, Class H



PHFB08 + PHFB10



PHFBM6



PHFB8X2



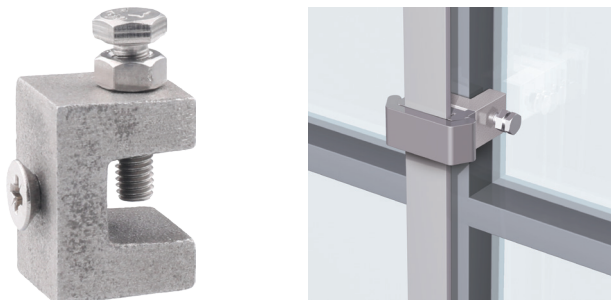
APPLICATION

COMPONENT ASSEMBLY:

- PHFBM6 + Non-metallic DC Clip = [Assembly with copper rod]
- PHFBM6 + Metallic DC Clip = [Assembly with copper rod]
- PHFBM6 + Metallic Cable Saddles = [Assembly with copper rod]
- PHFBM6 + Square Clamp = [Assembly with copper rod]
- PHFBM6 + Square Clamp = [Assembly with copper rod]

Clip/Clamps NOT included - must be ordered separately.

Glazing Bar Holdfasts



Glazing Bar holdfast is used to fix clips to glazing bars. Can be used with both metallic and non-metallic clips.

CONDUCTOR TYPE	MATERIAL	WEIGHT (kg)	PART NO.
Aluminium	Aluminium	0.04	AGBH
Copper	Copper	0.11	GGBH

Material: Gunmetal/Aluminium

APPLICATION

COMPONENT ASSEMBLY: Glazing Bar Holdfast + All Kingsmill DC clips =

Back Plate Holdfasts



Back Plate holdfast maintains a set distance of 75mm between lightning conductor and the surface of the structure being protected (when required).

Supplied with M6 CSK screw for attaching either Tape Clip or Square Clamp.

CONDUCTOR TYPE	MATERIAL	WEIGHT (kg)	PART NO.
Aluminium	Aluminium	0.84	ABPH
Copper	Copper	0.26	BBPH

Material: Copper Alloy/Aluminium

FIXINGS

2 x CSK 1½ x No.10 woodscrew (BCSW1.5-10 brass for copper/A2CSKSLT1.5-10 stainless steel for aluminium) + plug (PP10) not included **SEE PAGE FIT:20**

APPLICATION

COMPONENT ASSEMBLY: Back Plate Holdfast + Non-metallic DC clips =

APPLICATION

COMPONENT ASSEMBLY: Back Plate Holdfast + Metallic DC clips =

APPLICATION

COMPONENT ASSEMBLY: Back Plate Holdfast + Square clamps =

Clip/Clamps NOT included - must be ordered separately.

Standing Seam Clamps

Standing Seam Clamps are designed to allow the installer to secure Lightning Conductors to roofing sheets that use the Standing Seam construction.

Aluminium Standing Seam Clamps (seam widths 16 - 30mm)

FIXING TYPE	CONDUCTOR SIZE (mm)	CONDUCTOR MATERIAL	FIXING COLOUR	WEIGHT (kg)	PART NO.
Non-metallic DC Clip	25 x 3	Bare Al	Grey	0.096	KMFBAL-PCGY253B
	25 x 3	PVC Al	Grey	0.096	KMFBAL-PCGY253P
Metallic DC Clip	25 x 3	Bare Al	-	0.098	KMFBAL-MDA253
	25 x 3	PVC Al	-	0.099	KMFBAL-MDA253P
Push-In Clip	8mm dia	Bare Al	Grey	0.096	KMFBAL-PCGY08B/PUSH
	8mm dia	PVC Al	Grey	0.096	KMFBAL-PCGY08P/PUSH
Square Clamp	25 x 3	Aluminium	-	0.168	KMFBAL-SQCA253
	25 x 3	Aluminium	-	0.168	KMFBAL-SQCAF253
Standing Seam only	-	-	-	0.095	KMFBAL

Material: Aluminium

Stainless Steel Standing Seam Clamps (seam widths 16 - 30mm)

FIXING TYPE	CONDUCTOR SIZE (mm)	CONDUCTOR MATERIAL	FIXING COLOUR	WEIGHT (kg)	PART NO.
Non-metallic DC Clip	25 x 3	Bare Al	Grey	0.16	KMFBSS-PCGY253B
	25 x 3	PVC Al	Grey	0.16	KMFBSS-PCGY253P
Metallic DC Clip	25 x 3	Bare Al	-	0.18	KMFBSS-MDA253
	25 x 3	PVC Al	-	0.19	KMFBSS-MDA253P
Push-In Clip	8mm dia	Bare Al	Grey	0.16	KMFBSS-PCGY08B/PUSH
	8mm dia	PVC Al	Grey	0.16	KMFBSS-PCGY08P/PUSH
Square Clamp	25 x 3	Aluminium	-	0.23	KMFBSS-SQCA253
	25 x 3	Aluminium	-	0.23	KMFBSS-SQCAF253
Non-metallic DC Clip	25 x 3	Bare Cu	Brown	0.16	KMFBSS-PCBN253B
	25 x 3	PVC Cu	Brown	0.16	KMFBSS-PCBN253P
Metallic DC Clip	25 x 3	Bare Cu	-	0.22	KMFBSS-MDCF253
	25 x 3	PVC Cu	-	0.28	KMFBSS-MDCF253P
Push-In Clip	8mm dia	Bare Cu	Brown	0.16	KMFBSS-PCBN08B/PUSH
	8mm dia	PVC Cu	Brown	0.16	KMFBSS-PCBN08P/PUSH
Square Clamp	25 x 3	Copper	-	0.39	KMFBSS-SQCC253
	25 x 3	Copper	-	0.38	KMFBSS-SQCCF253
Standing Seam only	-	-	-	0.15	KMFBSS

Material: Stainless Steel

The **Standing Seam Clamp** only can be used with a range of other fittings and is supplied with an M6 stainless steel bolt and nut for securing the chosen accessory.

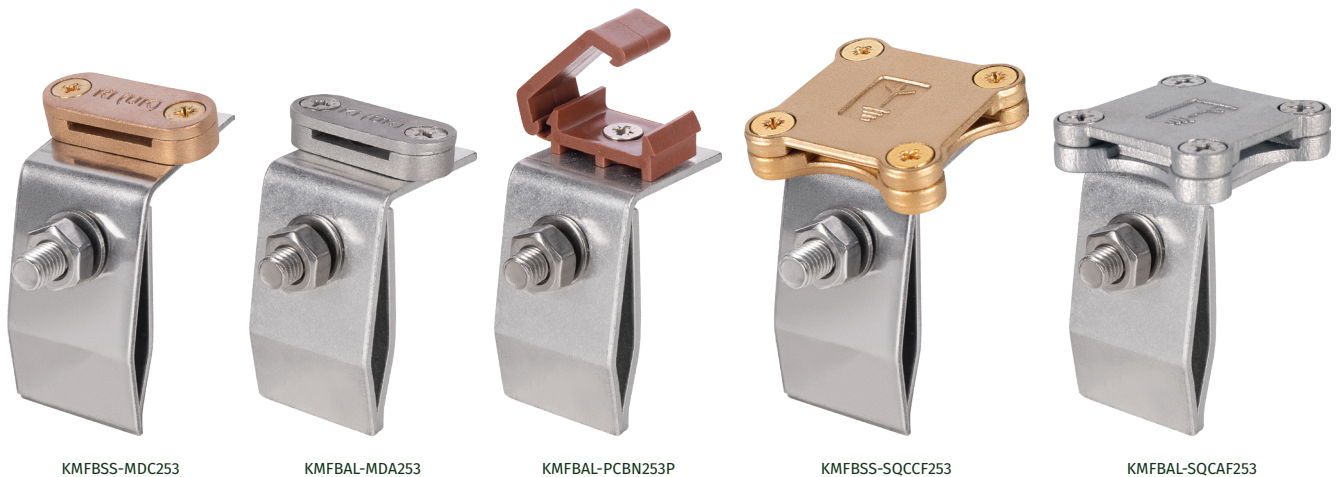
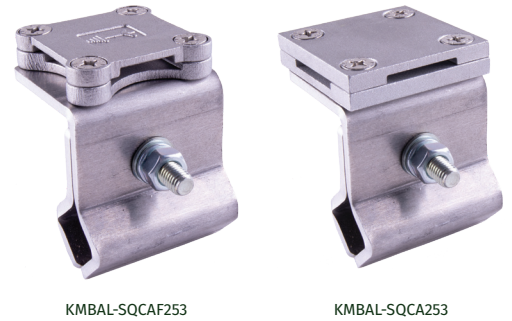


Plate Type Test Clamp

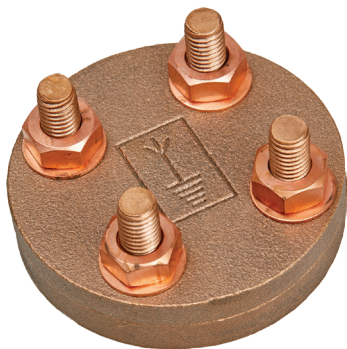


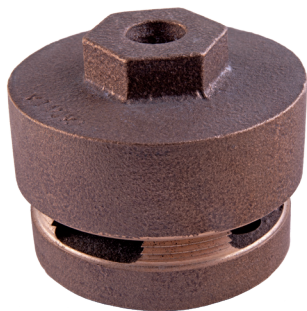
Plate Type Test Clamps are used to form a disconnecting joint between the Down Conductor System and the Earthing System. Conductors are secured by the top and bottom plates being clamped together.

CONDUCTOR SIZE (mm)	CONDUCTOR MATERIAL	WEIGHT (kg)	PART NO.
25 x 3	Copper	0.90	PTTC253

Material: Gunmetal
Standard: BS:EN 62561-1, Class H
Tightening Torque: 15Nm



Screw Down Test Clamp



Screw Down Test Clamps join 25 x 3 conductor tape to facilitate annual testing of the Lightning Protection System. The heavy duty lid simply screws on and off the threaded base.

CONDUCTOR SIZE (mm)	CONDUCTOR MATERIAL	WEIGHT (kg)	PART NO.
25 x 3	Copper	0.84	SDTC253

Material: Copper
Standard: BS:EN 62561-1, Class H
Tightening Torque: 20Nm



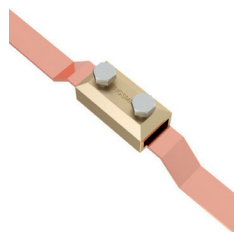
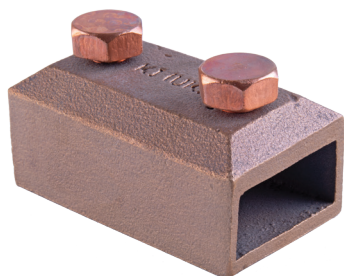
FIXINGS

2 x CSK 1½ x No.10 woodscrew (BCSW1.5-10) + plug (PP10) not included



[SEE PAGE FIT:20](#)

Oblong Test Clamps



Oblong Test Clamps are designed to join conductor tape to facilitate in the annual testing of the Lightning Protection System. The clamp is designed to allow the conductor to be overlapped and secured using bolts. *Suitable for use with PVC covered tape.*

CONDUCTOR SIZE (mm)	CONDUCTOR MATERIAL	WEIGHT (kg)	PART No.
25 x 3	Aluminium	0.16	OTCA253
25 x 3	Copper	0.40	OTCC253
31 x 6	Copper	0.38	OTCC316
40 x 5	Copper	0.53	OTCC405
50 x 6	Copper	1.35	OTCC506

Material: Aluminium/Copper
Standard: BS:EN 62561-1, Class H
Tightening Torque: 15Nm

Cable Test Clamps

Cable Test Clamps are used to form a disconnecting joint between the Down Conductor System and the Earthing System. The conductors overlap end to end and secure together using two bolts.

CONDUCTOR SIZE (mm)	CONDUCTOR MATERIAL	WEIGHT (kg)	PART NO.
50	Copper	0.40	TC50
70	Copper	0.40	TC70
95	Copper	0.40	TC95

Material: Gunmetal

Standard: BS:EN 62561-1, Class H

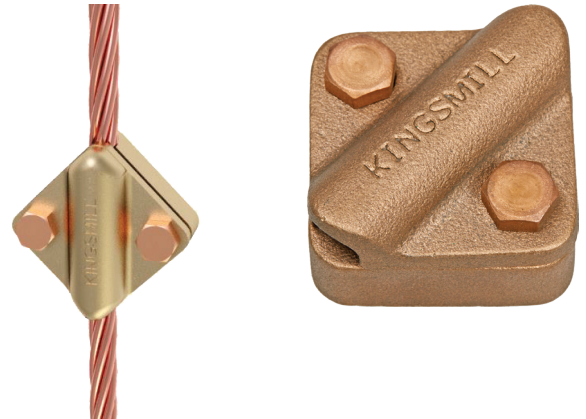
Tightening Torque: 6Nm



FIXINGS
1 x CSK 1½ x No.10 woodscrew (BCSW1.5-10) + plug (PP10) not included



SEE PAGE FIT:20



Test Clamps (Flat to circular conductor)

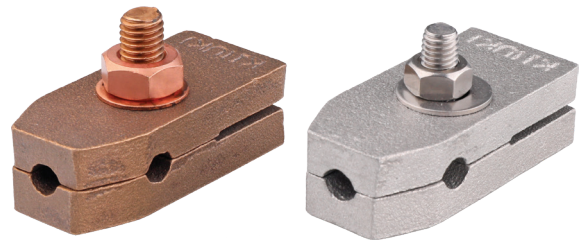
Test Clamps form a disconnecting joint between either 8mm and 8mm diameter conductor or 8mm and 25 x 3mm conductor.

CONDUCTOR DIA. (mm)	CONDUCTOR SIZE (mm)	CONDUCTOR MATERIAL	WEIGHT (kg)	PART NO.
8.0	25 x 3	Copper	0.20	TC08
8.0	25 x 3	Aluminium	0.09	TA08

Material: Copper/Aluminium

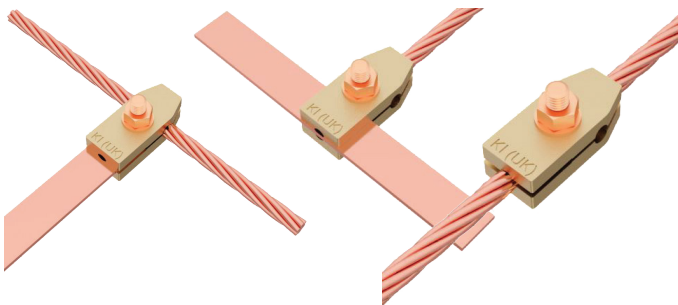
Standard: BS:EN 62561-1, Class H

Tightening Torque: 12Nm

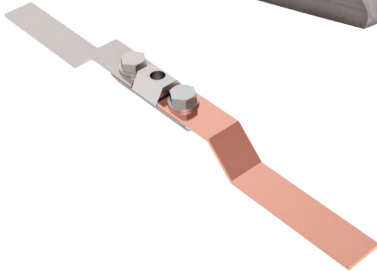


TC08

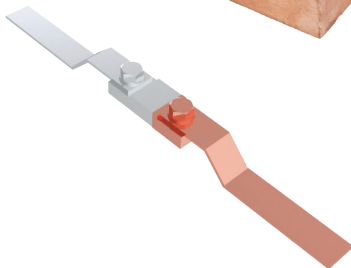
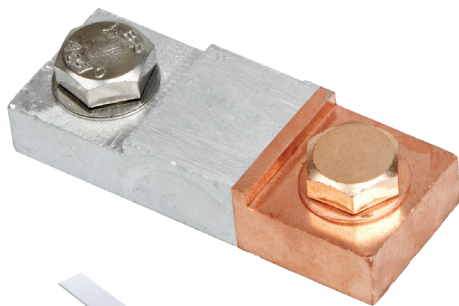
TA08



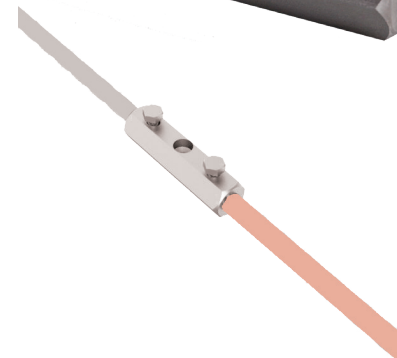
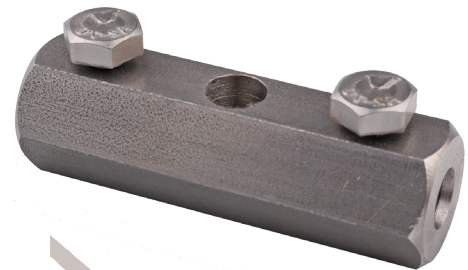
Bimetallic Connectors



Stainless steel connector for use with 25mm x 3mm conductor



Copper/aluminium connector for use with 25mm x 3mm conductor



Stainless steel connector for use with 25mm x 3mm, 8 dia or 50mm² conductor

Bimetallic Connectors are designed to connect aluminium conductor to copper earth conductor. They are a practical joining method without the need for tinning, riveting or wrapping around the joint. We recommend the use of oxide inhibiting compound (UNP250) with Bimetallic Connectors.

CONDUCTOR SIZE (mm)	CONNECTOR MATERIAL	WEIGHT (kg)	PART NO.
25 x 3	Stainless Steel	0.18	BM253HS
8 dia or 50mm ²	Stainless Steel	0.18	BM08HS
25 x 3 to 8 dia or 50mm ²	Stainless Steel	0.18	BM08253SS
25 x 3	Copper/Aluminium	0.18	BM253FC

Material: Stainless Steel grade 303 (BM253HS/BM08HS/BM08253SS)
Copper/Aluminium fuse welded (BM253FC)

Standard: BS:EN 62561-1, Class H

Tightening Torque: 12Nm



FIXINGS

1 x CSK 1½ x No.10 woodscrew (A2CSKSLT1.5-10) + plug (PP10) not included




[SEE PAGE FIT:20](#)

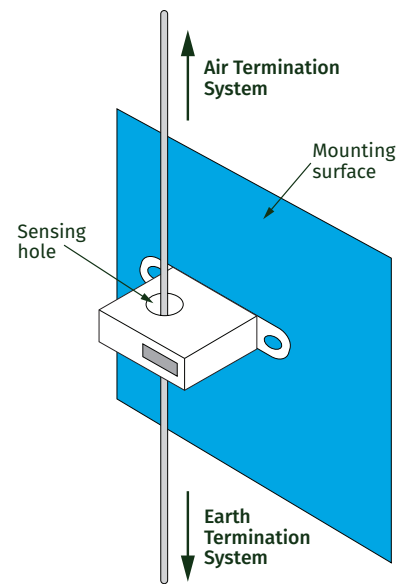
Lightning Strike Counter

Lightning Strike Counters register direct lightning events. They have a long life and do not require a battery or external power.

A sensitive response trigger current of only 500A can register very high lightning strikes up to 150kA 8/20µs. **Lightning Strike Counters** utilise a 6 digit mechanical count display and are IP67 rated for outdoor use. Suitable for use with 8mm dia and 25 x 3mm conductors.

PART NO.	HIT-LEC-D
Counting current (rise time $\geq 8\mu\text{s}$)	>500A
Impulse sequence	>1s
Display model	Electromechanical digital display
Indicator	Lightning event 0 - 999999
Current sample mode	Inductive probe (built-in)
Working mode	No battery need
Operation temperature	-20°C - +60°C
Window dimension	32mm
Counter dimension	150mm x 80.5mm x 36mm
Enclosure material	Steel
Degree of protection	IP67

FIXINGS
 2 x CSK 1½ x No.10 woodscrew (A2CSKSLT1.5-10) + plug (PP10) not included  **SEE PAGE FIT:20**



Screws & Plugs



DESCRIPTION	SIZE	WEIGHT (kg)	PART NO.
Brass C/S Woodscrew	1½" x 10g	0.50	BCSW1.5-10
Brass C/S Woodscrew	1½" x 12g	0.60	BCSW1.5-12
CSK SLT ST/ST Screws	1" x 10g	0.60	A2CSKSLT101
CSK SLT ST/ST Screws	1½" x 10g	0.60	A2CSKSLT1.5-10
Plastic Wall Plug (Red) 8 - 10G	No.10	0.06	PP-10
Plastic Wall Plug (Brown) 10 - 12G	No.12	0.06	PP-12
Brass Roundhead Woodscrew	No.12	0.60	BRHW1.5-12
Stainless Steel Roundhead Woodscrew	No.12	0.60	A2RHSL1.5-12

OTHER MATERIALS ARE AVAILABLE ON REQUEST