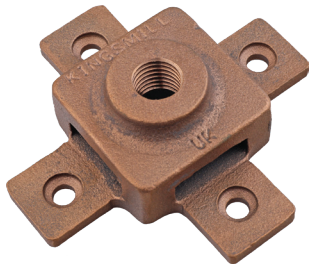
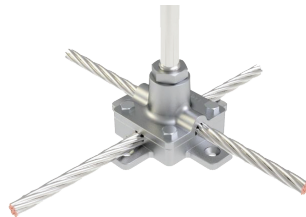


Air Terminal Bases



CATBxx - Tape



Kingsmill **Air Terminal Bases** are designed to be used with the Kingsmill **Air Terminals** and **Elevation Rods**.

THREAD DIA (mm)	CONDUCTOR SIZE (mm)	MATERIAL	WEIGHT (kg)	PART NO.
16	25	Copper	0.50	CATB16
16	25	Aluminium	0.17	AATB16
10	8 or 25 x 3	Aluminium	0.15	AATB10
16	31 x 6	Copper	0.50	CATB316
16	50mm ²	Copper	0.80	CATB50
16	70mm ²	Copper	0.75	CATB70
16	95mm ²	Copper	0.90	CATB95

Material: Gunmetal/aluminium

Standard: BS:EN 62561-1, Class H



FIXINGS

4 x CSK 1½ x No.10 woodscrew
(BCSW1.5-10 brass for copper/
A2CSKSLT1.5-10 stainless steel for
aluminium) + plug (PP10) not included



SEE FIXINGS

SECTION - PAGE FIX:4



CATBxx - Stranded Conductor



CATBxx - Stranded Conductor



AATBxx (in horizontal mode)
- Solid Circular or Tape



AATBxx (in vertical mode)
- Solid Circular or Tape